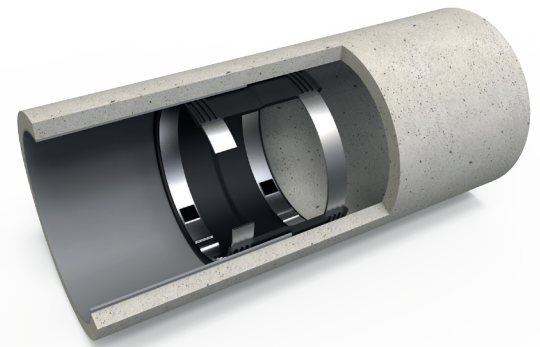




# VIP-Weco (LES) Liner End Seal Application



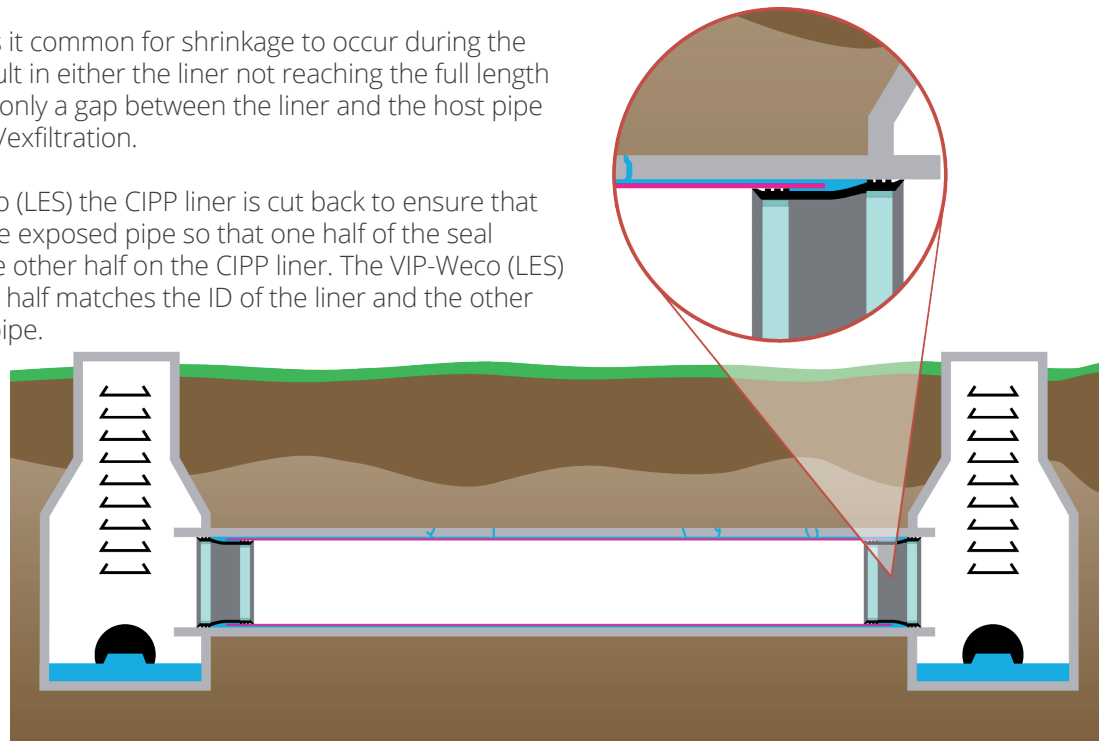
VIP-Weco can be manufactured to be used for sealing the ends of a CIPP liner which has been installed in a pipe. They are designed to seal the exposed ends of a relined pipe that has been lined with a cured in place product in order to prevent infiltration/exfiltration into or from the end of the liner.



When installing CIPP liners it is common for shrinkage to occur during the curing process. This can result in either the liner not reaching the full length of the pipe or a more commonly a gap between the liner and the host pipe which can lead to infiltration/exfiltration.

When installing the VIP-Weco (LES) the CIPP liner is cut back to ensure that there is sufficient area on the exposed pipe so that one half of the seal profile is on the pipe and the other half on the CIPP liner. The VIP-Weco (LES) is manufactured so that one half matches the ID of the liner and the other matches the ID of the host pipe.

Once in place, the tension bands can be placed in the appropriate grooves and tensioned using the hydraulic spreading tool supplied.



## Benefits of VIP-Weco (LES)

- Can be manufactured to any diameter available in the VIP-Weco range (DN185 to DN3500).
- Available in a choice of material grades for different applications.
- Can be manufactured to fit a range of pipe profiles including circular, egg shape, ellipse, mouth, etc.
- Can be manufactured for instances where the difference between the host pipe and liner is large.