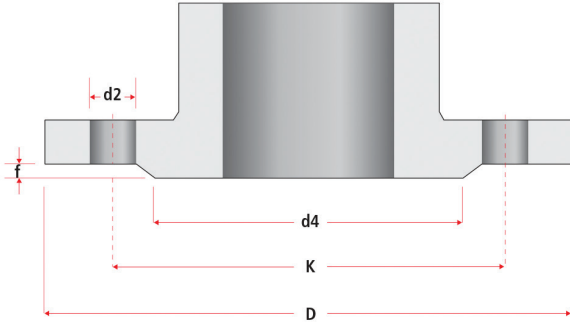




## Flange Dimensions



Plain edge: Sizes up to 100mm



Scalloped edge: Sizes 125mm to 300mm

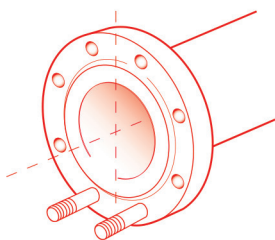


Locator type: Sizes DN350 to DN600

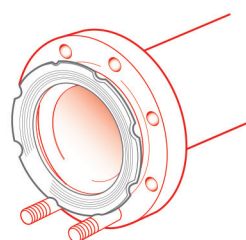
Nom Size mm	PN 10						PN 16						PN 25						PN 40						
	Flange		f	Drilling		K	Flange		f	Drilling		K	Flange		f	Drilling		K	Flange		f	Drilling		K	
D	d4	No.		d2	D		d4	No.		d2	D		d4	No.		d2	D		d4	No.		d2	D		d4
80	200	138	3	8	18	160	200	138	3	8	18	160	200	138	3	8	18	160	200	138	3	8	18	160	
100	220	158	3	8	18	180	220	158	3	8	18	180	235	162	3	8	22	190	235	162	3	8	22	190	
125	250	188	3	8	18	210	250	188	3	8	18	210	270	188	3	8	26	220	270	188	3	8	26	220	
150	285	212	3	8	22	240	285	212	3	8	22	240	300	218	3	8	22	240	300	218	3	8	26	250	
200	340	268	3	8	22	295	340	268	3	12	22	295	360	278	3	12	26	310	375	285	3	12	30	320	
250	395	320	3	12	22	350	405	320	3	12	26	355	425	335	3	12	30	370	450	345	3	12	33	385	
300	445	370	4	12	22	400	460	378	4	12	26	410	485	395	4	16	30	430	515	410	3	16	33	450	
350	505	430	4	16	22	460	520	438	4	16	26	470	555	450	4	16	33	490	580	465	4	16	36	510	
400	565	482	4	16	26	515	580	490	4	16	30	525	620	505	4	16	36	550	660	535	4	16	39	585	
450	615	532	4	20	26	565	640	550	4	20	30	585	670	555	4	20	36	600	-	-	-	-	-	-	-
500	670	585	4	20	26	620	715	610	4	20	33	650	730	615	4	20	36	660	755	615	4	20	42	670	
600	780	685	5	20	30	725	840	725	5	20	36	770	845	720	5	20	39	770	890	735	5	20	48	795	

VIP Corrugaskets are suitable for the following pressure classes:  
Up to and including 300mm PN 10 to PN 25 (BS. 1092-1)  
350mm and above PN 16 (BS. 1092-1)

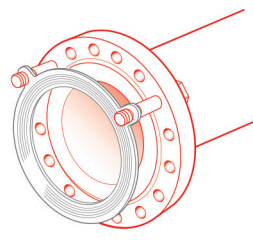
### Installing the Corrugasket™



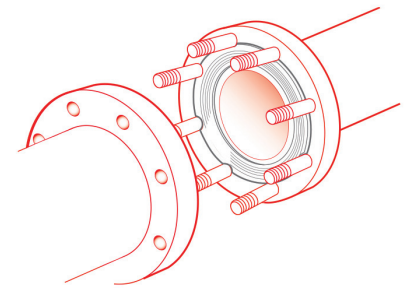
Align flange so that top two bolt holes are positioned evenly, one on each side of central vertical axis of flange. If using Plain edge or Scalloped edge Corrugaskets, put 2-3 bolts in place at bottom of flange to act as a prop for the Corrugasket.



Lay the Corrugasket in place with bottom edge resting on bolts. On Scalloped edge Corrugaskets ensure that notches on gasket fit snugly around bolt holes. Match bore of Corrugasket to bore of flange.



On Locator type Corrugasket only, insert two bolts into holes on upper half of flange. Loop the locators on Corrugasket over the bolts to position the gasket on the flange.



Match opposite flange face to face with gasket and insert remaining bolts. Note all bolts should be inserted from the same side. Tighten bolts as normal, using a diametrical tightening sequence, maintaining the flanges parallel at all times.